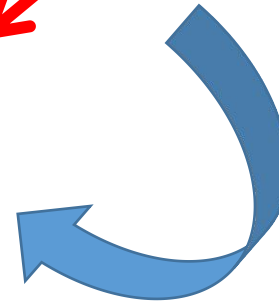
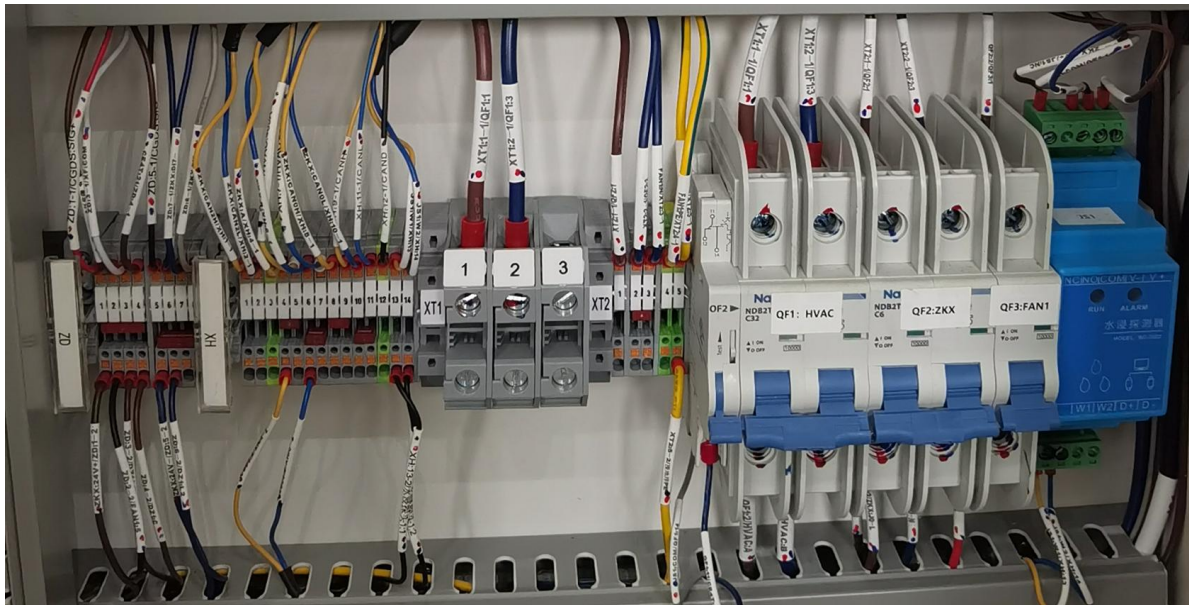
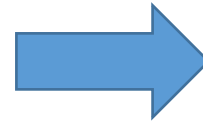
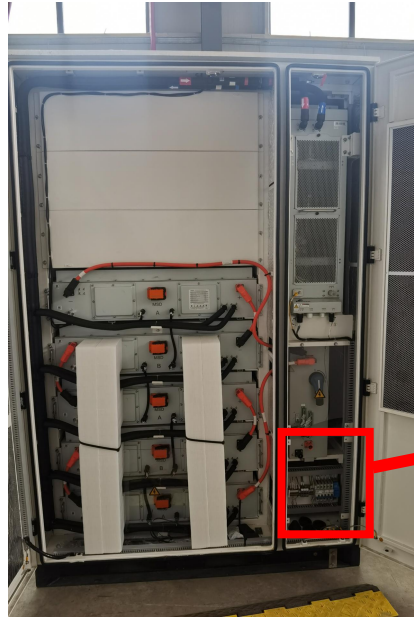
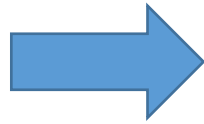
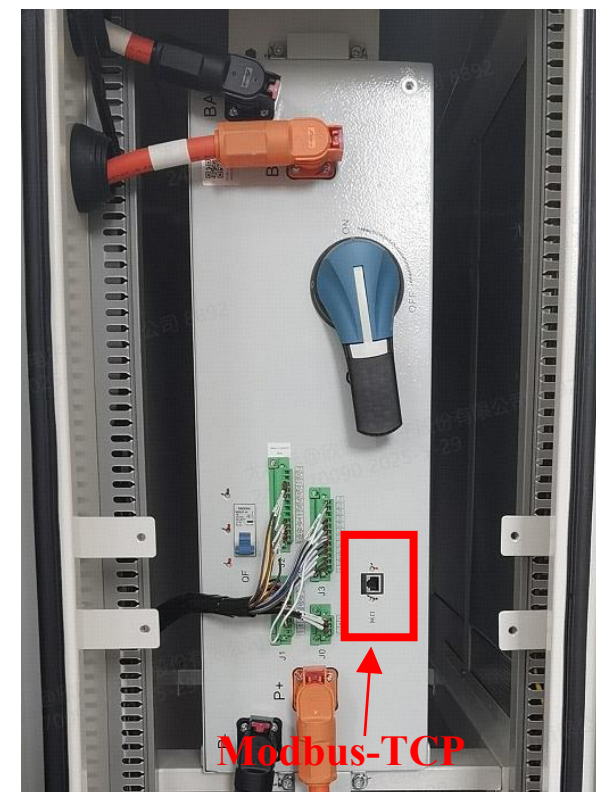
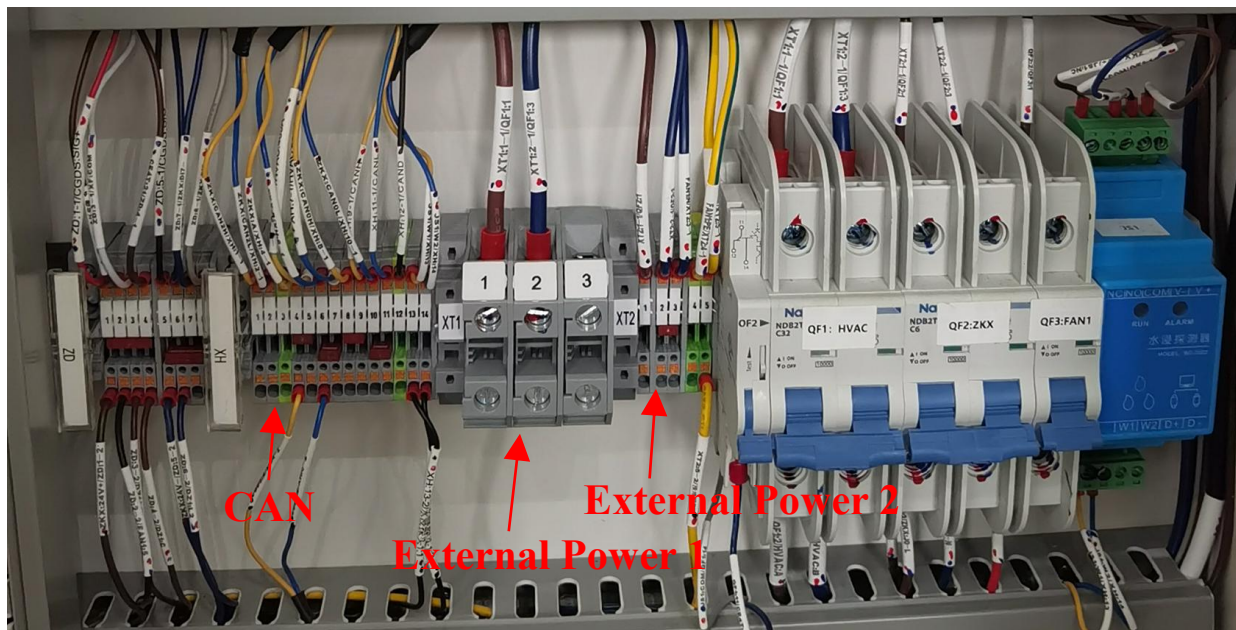


I. Secondary Cable Connection

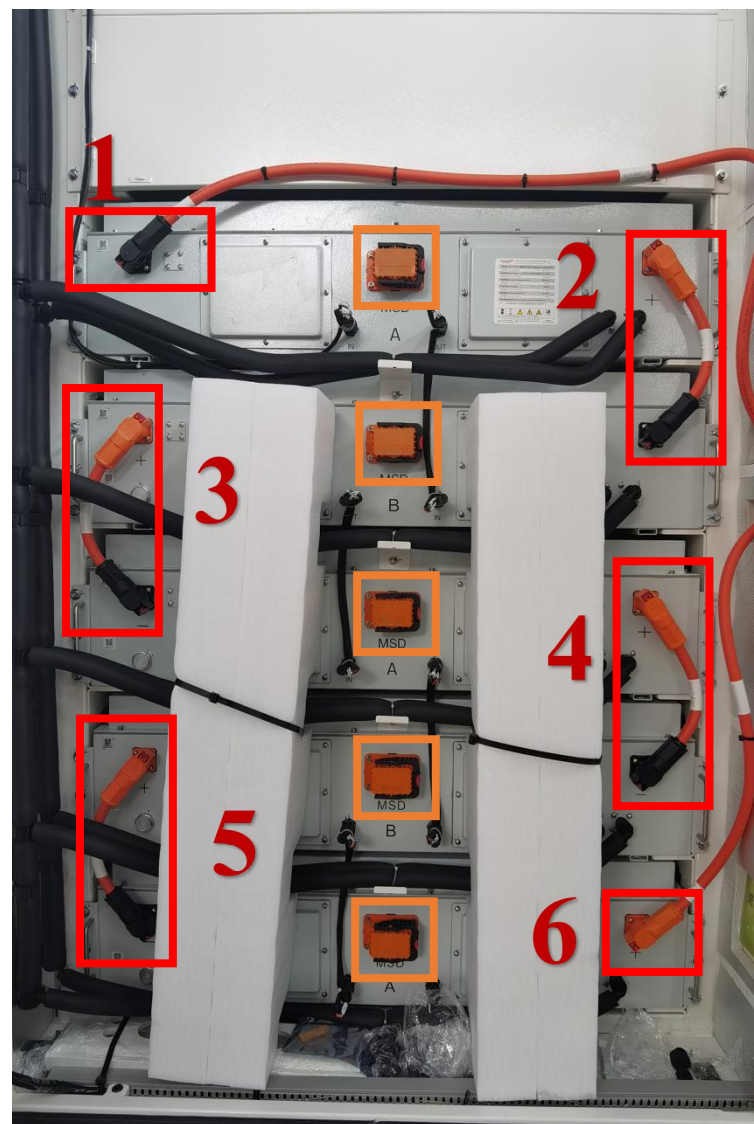
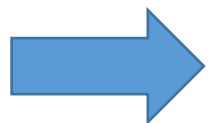




Secondary Cable Connection

NO.	Pin	Definition	Specification	Instruction	Note
1	XT1:1-2	L	UL 10269 10AWG	AC 220V, liquid-cooled unit power supply cable	External Power 1: $\geq 5\text{kW}$, supplied by the customer
	XT1:2-2	N			
2	XT2:1-2	L	UL 10269 18AWG	AC 220V, control box power supply cable	External Power 2: $\geq 1\text{kW}$ (UPS power is best), supplied by the customer
	XT2:2-2/3-2	N			
3	XH:1-2	CAN H	UL 2517 20AWG	CAN communication cable	Supplied by the customer
	XH:2-2	CAN L			
4	Ethernet (LAN)	LAN	RJ45, CAT6	Modbus-TCP communication cable	Selected according to actual needs, supplied by the customer

II. Primary Cable Connection



1、对应好正负极，由负至正依次连接，不可从正负两端开始最后连接中间，按图上 1、2、3、4、5、6 顺序连接。

Match the positive and negative terminals correctly. Connect in order from negative to positive. Do not start from both ends (positive and negative) and connect the middle last. Follow the connection sequence as shown in the diagram: 1, 2, 3, 4, 5, 6.

2、所有的动力连接器均采用快插形式，将插头插入插座时，锁紧瞬间可以听到明确的快插反馈声音，观察快插头侧边的锁键、可看到锁键平面反弹至水平位置。

All power connectors use a quick-plug design. When inserting the plug into the socket, a clear clicking sound can be heard at the moment of locking, indicating successful connection. Observe the locking tab on the side of the quick plug — the flat surface of the tab will spring back to a horizontal position.

3、安装 MSD 检修开关，如下图所示。Install the MSD service switch as shown below.



1



2



3



4



5

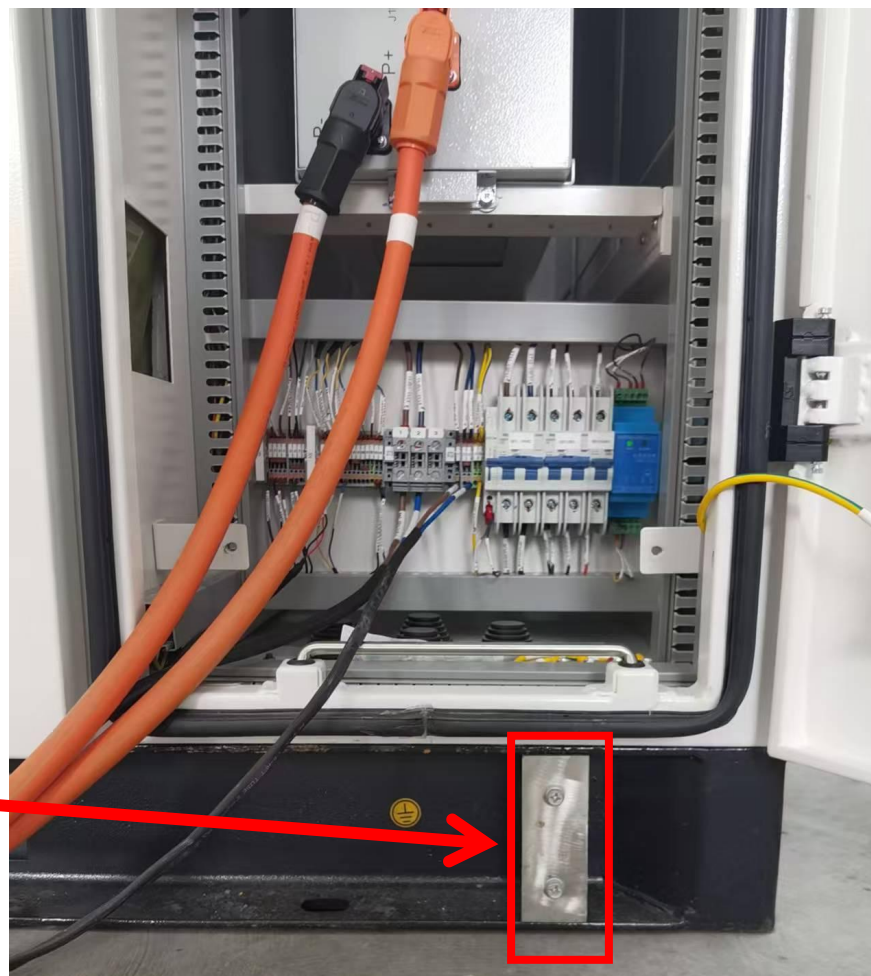


6

注：红色按钮卡住即表示安装完成。

Note: The installation is complete when the red button is stuck (or clicks into place).

III. Connect the Ground Cable



户外柜可用 2AWG 接地线（客户自供），M6*16 接地螺钉，在每个柜体下方配备有接地孔，户外柜通过接地线接至现场接地系统。
Outdoor cabinets can be used with 2AWG grounding cable (supplied by the customer), M6*16 grounding screws, and grounding holes are equipped under each cabinet, and the outdoor cabinets are connected to the on-site grounding system through the grounding cable.